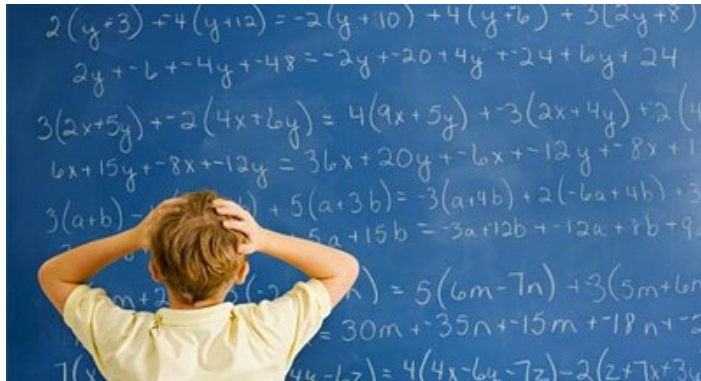


# Math in Schools



## A MAPC Forum for Parents

*Enlightening parents about math education in Manitoba schools  
and the strategies they might employ to support learning  
both at home and in the community*



**Saturday,**

**Nov 14, 2015**

9:00 a.m. - 12:30 p.m.  
(Registration opens at 8:45 a.m.)

**Louis Riel School Division  
Offices**

*St. Vital Room*

900 St. Mary's Rd.

This is a free event open to all schools in Manitoba, but registration is required as space is limited. Join us to learn about MAPC and our partners!

Register today by emailing  
[info@mapc.mb.ca](mailto:info@mapc.mb.ca).

### Manitoba Association of Parent Councils

1005 - 401 York Avenue  
Winnipeg, MB R3C 0P8

Phone: 204-956-1770

Toll Free: 1-877-290-4702

Fax: 204-956-7780

[info@mapc.mb.ca](mailto:info@mapc.mb.ca)

[Facebook.com/mapcmb](https://www.facebook.com/mapcmb)

[Twitter.com/mapcmb](https://twitter.com/mapcmb)



# Math in Schools

## A MAPC Forum for Parents



### Agenda

- |            |  |
|------------|--|
| 8:45 a.m.  | Registration, networking and refreshments  |
| 9:05 a.m.  | Greetings and introductions  |
| 9:10 a.m.  | Hon. James Allum, Minister of Education and Advanced Learning: announcement to proclaim provincial recognition for volunteer Parent Advisory Councils  |
| 9:30 a.m.  | Introduction of panel participants and program presentations:<br><br><b>Carole Bilyk</b> , Coordinator<br>Manitoba Education and Advanced Learning<br>( <i>Sherry Perih</i> , Mathematics Consultant<br>Manitoba Education and Advanced Learning)<br><br><b>Jennifer Maw</b> , PhD<br>Assistant Coordinator, Assessment Unit<br>Manitoba Education and Advanced Learning<br><br><b>Dr. Ralph Mason</b> , Professor<br>Faculty of Education, University of Manitoba<br><br><b>Martha Koch</b> , PhD<br>Assistant Professor, Curriculum, Teaching & Learning<br>University of Manitoba |
| 10:30 a.m. | Small group discussions  |
| 11:00 a.m. | Large group sharing  |
| 11:20 a.m. | Coffee break   |
| 11:30 a.m. | Presentation: <i>Oh the Things you can Think about Mathematics Learning at Home</i><br><br>Presenter: <b>Sheri-Lynn Skwarchuk</b> , Ph.D.<br>Associate Professor and School Psychologist<br>Faculty of Education, University of Winnipeg   |
| 12:30 p.m. | Closing remarks  |

